

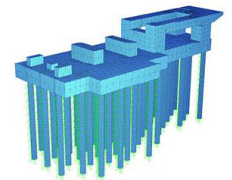
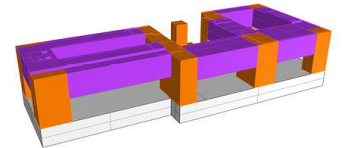
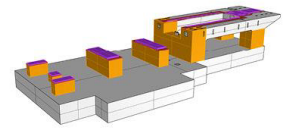
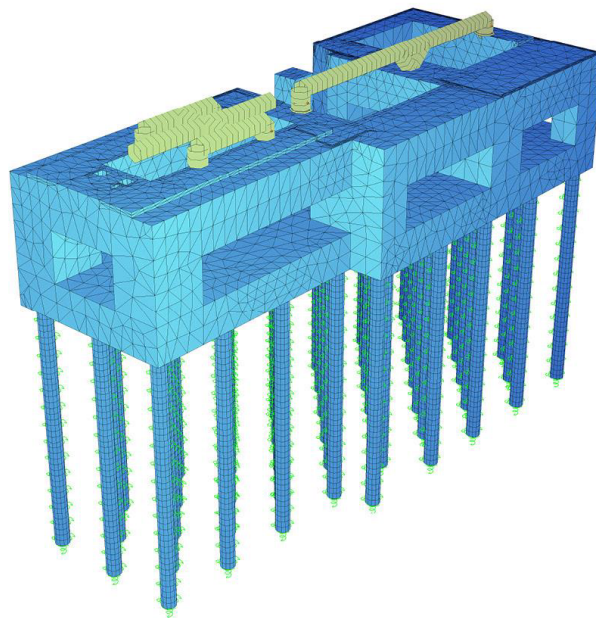


Combined cycle powerplant

Tuxpan, Veracruz, Mexico / 2019

Owner
Client

Iberdrola Energía Monterrey S.A. de C.V
Iberdrola Energía Monterrey S.A. de C.V



Construction Project of CC Tuxpan is located in the city of Tuxpan, Veracruz State, 6.55km far from the city centre.

It consists in the construction and operation of a Combined-cycle Power Plant with an energy generation power of 1228 MW. The Plant configuration is 2+1 (two gas turbine and one steam turbine).

The generation module consists of two gas turbines (with low NOx burning system), a steam turbine (with a final double flow body), two steam generators by heat recovery (HRSG) without post-burning, three electric generators and one air condenser.

FHECOR develops the engineering works (design and calculation) for gas turbine pedestals (Unit 1 and Unit 2), steam turbine pedestal and boiler stack (Unit 1 and Unit 2).



C/ Barquillo 23, 2º | 28004 Madrid | España
T. (+34) 917 014 460 | F. (+34) 915 327 864
www.fhecor.com | fhecor@fhecor.es